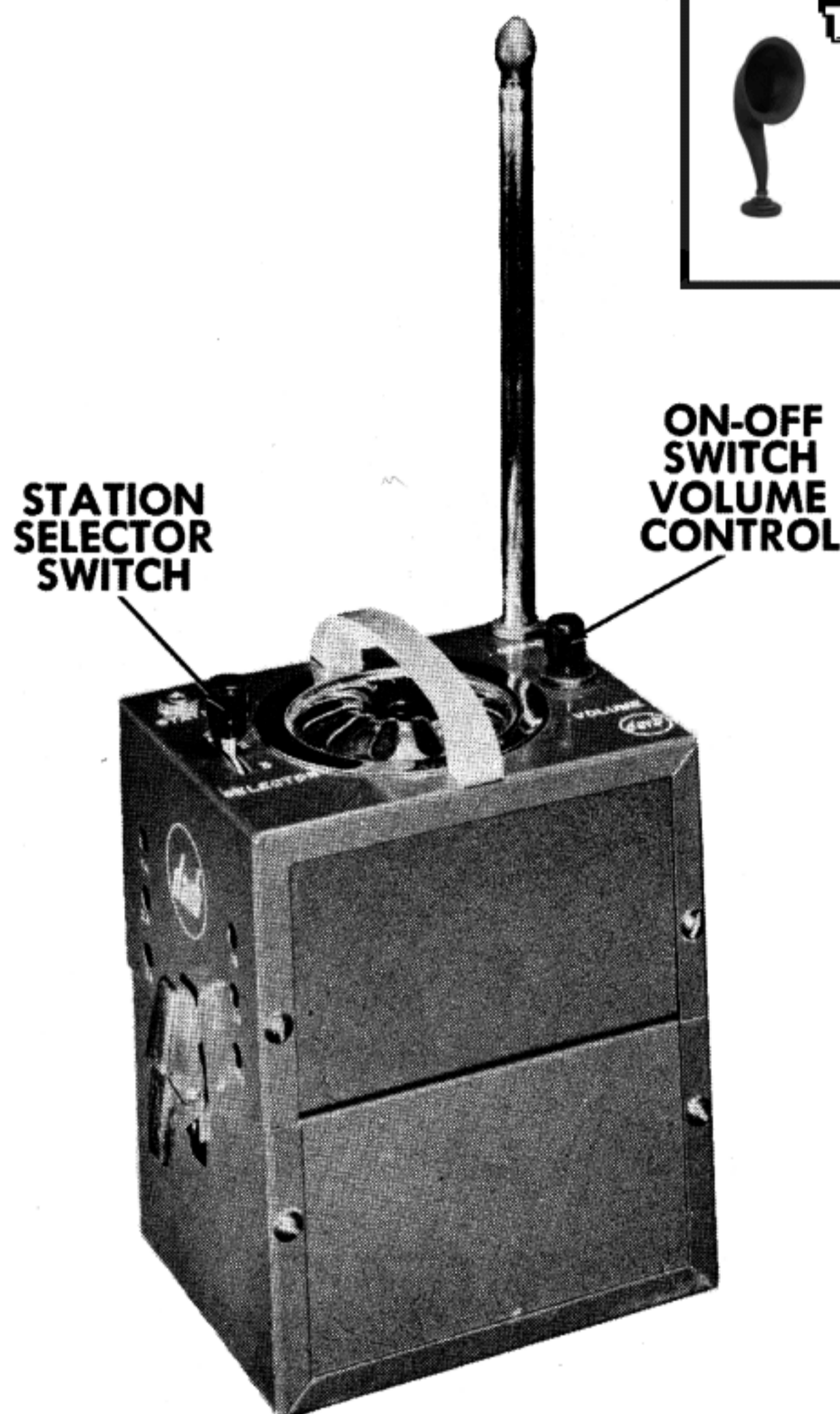


DARB  
MODEL "Holiday"DARB  
MODEL "Holiday"

TRADE NAME	Darb Model "Holiday"					
MANUFACTURER	S. C. Ryan Co., 1316 Yale Place, Minneapolis 3, Minn.					
TYPE SET	Battery Operated AM Superheterodyne Receiver					
TUBES (Four)	Types 1R5 Converter, 1U4 IF Amp., 1U5 Det. -AVC-AF Amp., 3V4 Output					
POWER SUPPLY	1.5 Volts "A" Supply & 67.5 Volts "B" Supply RATING 250MA @ 1.5 Volts DC & 9MA @ 67.5 Volts DC					
TUNING RANGE—BROADCAST	550KC-1650KC					
ALIGNMENT INSTRUCTIONS—READ CAREFULLY BEFORE ATTEMPTING ALIGNMENT						
Volume control should be at maximum position. Output of signal generator should be no higher than necessary to obtain an output reading. Use an insulated alignment screwdriver for adjusting.						
DUMMY ANTENNA	SIGNAL GENERATOR COUPLING	SIGNAL GENERATOR FREQUENCY	RADIO DIAL SETTING	OUTPUT METER	ADJUST	REMARKS
.01	High side to pin 6 (grid) of 1R5 (V1). Low side to chassis.	455KC (400% Mod.)		Across Voice Coil	A1, A2, A3, A4	Adjust for maximum output.
10MMF	High side to antenna terminal. Low side to chassis.	550KC		"	A5, A6	Screw trimmers completely in and adjust A5, A6 for maximum output.
TUNING ADJUSTMENT						
Note-Tune all stations with antenna fully extended.						
Selector Switch in Position #1						
Select station between 550KC and 1350KC, adjust B1 until desired station is heard, Adjust B2 for maximum volume.						
Selector Switch in Position #2						
Select station between 600KC and 1600KC, adjust B3 until desired station is heard. Adjust B4 for maximum volume.						
Selector Switch in Position #3						
Select station between 1100KC and 1650KC, adjust B5 until desired station is heard. Adjust B6 for maximum volume.						

## HOWARD W. SAMS &amp; CO., INC. • Indianapolis 5, Indiana

"The listing of any available replacement part herein does not constitute in any case a recommendation, warranty or guaranty by Howard W. Sams & Co., Inc., as to the quality and suitability of such replacement part. The numbers of these parts have been compiled from information furnished to Howard W. Sams & Co., Inc., by the manufacturers of the particular type of replacement part listed."

"Reproduction or use, without express permission, of editorial or pictorial content, in any manner, is prohibited. No patent liability is assumed with respect to the use of the information contained herein. Copyright 1956 by Howard W. Sams & Co., Inc., Indianapolis 5, Indiana, U. S. of America. Copyright under international Copyright Union. All rights reserved under Inter-American Copyright Union (1910) by Howard W. Sams & Co., Inc." Printed in U. S. of America

G-225

DATE 3-56

SET 310 FOLDER 2

PARTS LIST AND DESCRIPTIONS  
TUBES (GENERAL ELECTRIC, SYLVANIA)

DARB  
Model "Holiday"

CHASSIS—TOP VIEW

ITEM No.	USE	REPLACEMENT DATA		NOTES
		DARB PART No.	STANDARD REPLACEMENT	
V1	Converter	IR5	IR5	
V2	IF Amp.	IU4	IU4	
V3	Det. -AVC-AF Amp.	IU5	IU5	
V4	Output	3V4	3V4	

ELECTROLYTIC CAPACITORS

ITEM No.	RATING	REPLACEMENT DATA				
		DARB PART No.	AEROVOX PART No.	CORNELL-DUBILIER PART No.	MALLORY PART No.	PYRAMID PART No.
C1	8 150	CS-2256-1		TC41	TD-8-150	FM-1508

FIXED CAPACITORS

Capacity values given in the rating column are in mfd. for Paper Capacitors, and in mmfd. for Mica and Ceramic Capacitors.

ITEM No.	RATING	REPLACEMENT DATA							NOTES
		DARB PART No.	AEROVOX PART No.	CENTRALAB PART No.	CORNELL-DUBILIER PART No.	ERIE PART No.	MALLORY PART No.	SPRAGUE PART No.	
C2	10000	CS-2258-4	BPD-01	DD-103	KO82	811-01	DC-511	5HK-S1	
C3	50	CS-2258-5	BPD-00005	DD-500	GO34	831-500	UC-545	5GA-Q5	
C4	100	CS-2258-3	BPD-0001	DD-101	GO42	801-101	UC-531	5GA-T1	
C5	2000	CS-2258-2	BPD-002	DD-202	KO72	801-002	DC-522	5HK-D2	
C6	100	CS-2258-3	BPD-0001	DD-101	GO42	801-101	UC-531	5HK-T1	
C7	5000	CS-2258-1	BPD-005	DD-502	KO80	811-005	DC-525	5HK-D5	
C8	5000	CS-2258-1	BPD-005	DD-502	KO80	811-005	DC-525	5HK-D5	
C9	2000	CS-2258-2	BPD-002	DD-202	KO72	801-002	DC-522	5HK-D2	
C10	10000	CS-2258-4	BPD-01	DD-103	KO82	811-01	DC-511	5HK-S1	

CONTROLS

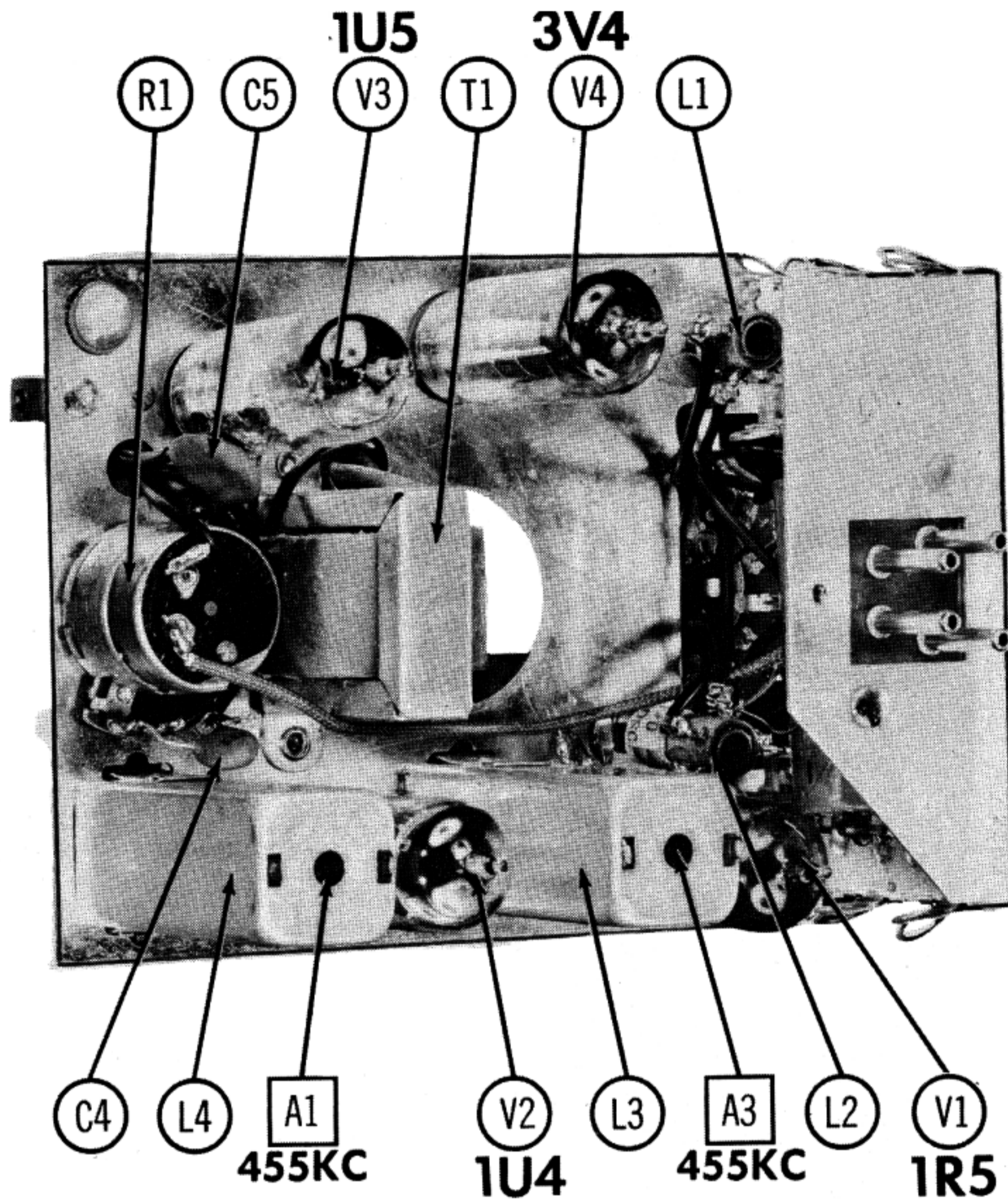
ITEM No.	RATING	REPLACEMENT DATA				INSTALLATION NOTES
		DARB PART No.	CENTRALAB PART No.	CLAROSTAT PART No.	IRC PART No.	
R1A	1Meg	BS2243	AB-70	A47-1Meg-Z	Q13-137	Volume Attach to R1A.
B	Shaft	Not Req.	AK-3	FS-3	Not Req.	Attach to R1A.
C	Switch	Not Req.	KB-1	SWE-12	76-1	

RESISTORS

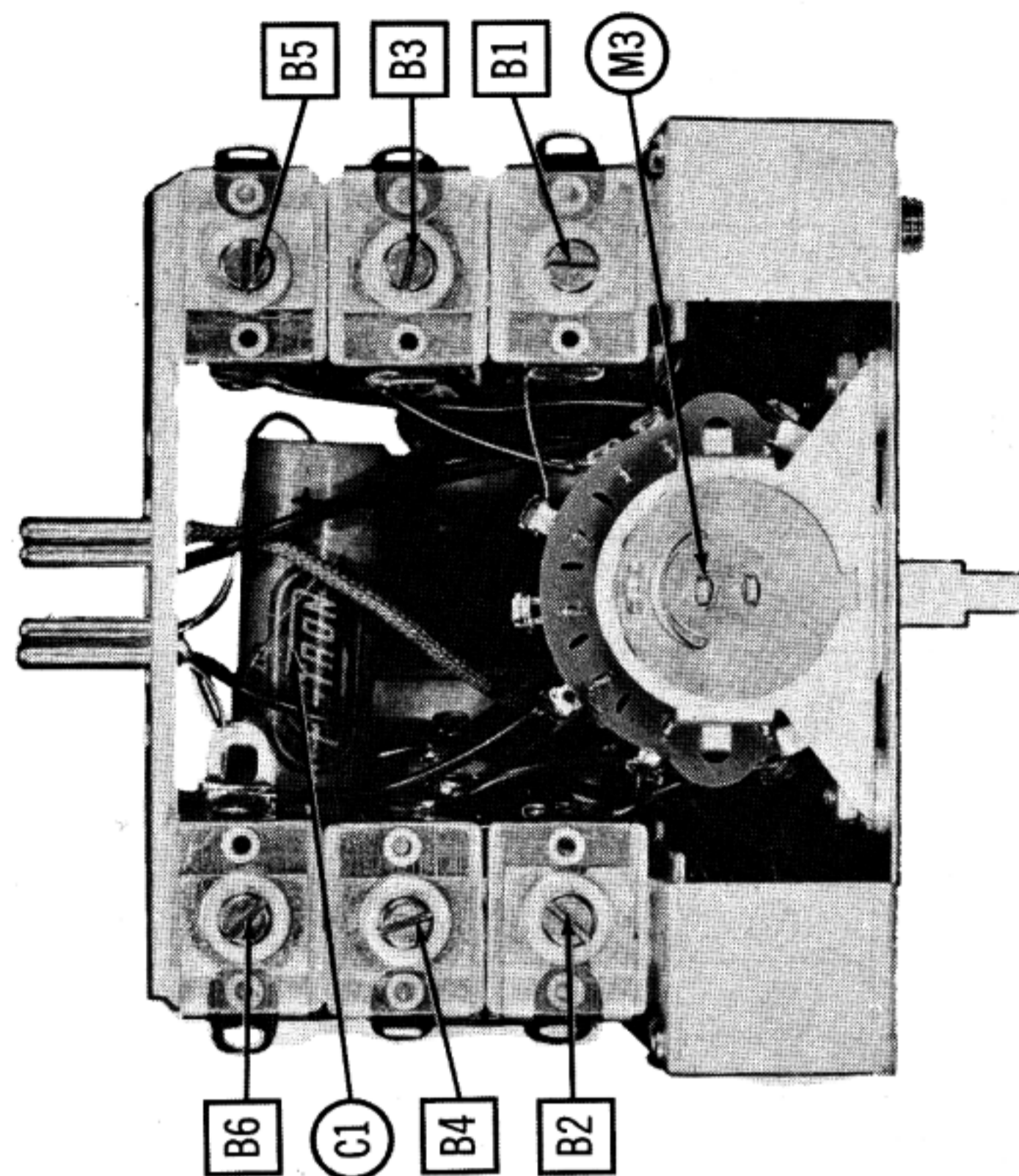
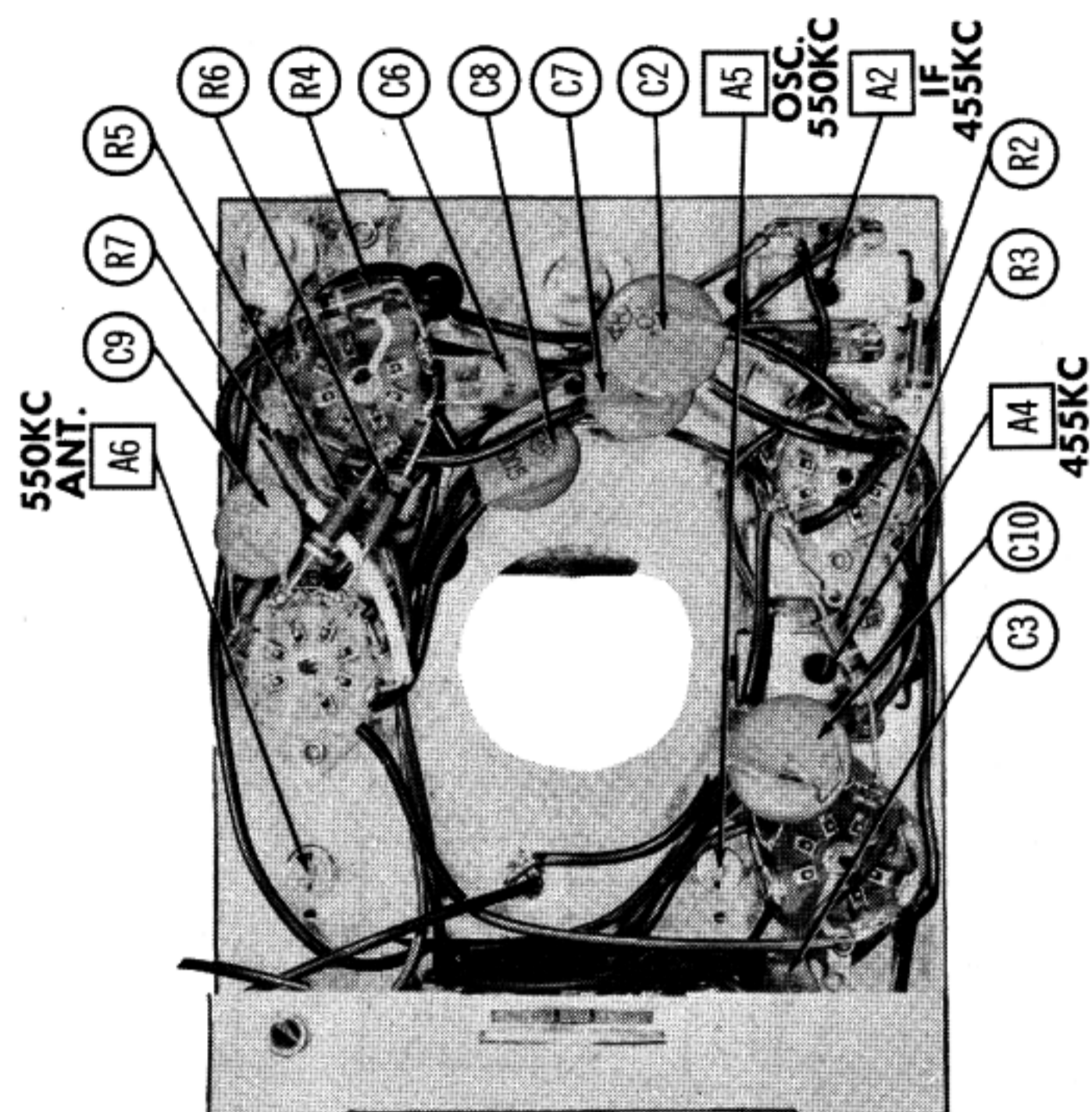
ITEM No.	RATING	REPLACEMENT DATA		NOTES
		DARB PART No.	IRC PART No.	
R2	4.7Meg	CS2263-5	BTS-4.7Meg	
R3	100KΩ	CS2263-2	BTS-100K	
R4	10Meg	CS2263-1	BTS-10Meg	
R5	4.7Meg	CS2263-5	BTS-4.7Meg	

TRANSFORMER (AUDIO OUTPUT)

ITEM No.	IMPEDANCE	REPLACEMENT DATA				NOTES
		DARB PART No.	Halldorson PART No.	Merit PART No.	Stancor PART No.	
T1	9KΩ 3.2Ω	BS2246		A-2927	24S49	



## CHASSIS—BOTTOM VIEW



## CHASSIS - SIDE VIEW

## PARTS LIST AND DESCRIPTIONS (Continued)

## SPEAKER

ITEM No.	RATINGS			REPLACEMENT DATA		NOTES
	SIZE	FIELD	V. C. IMP.	DARB PART No.	QUAM TYPE No.	
SP1	3 1/2"	PM	3, 2Ω	BS-2247		

## COILS (RF-IF)

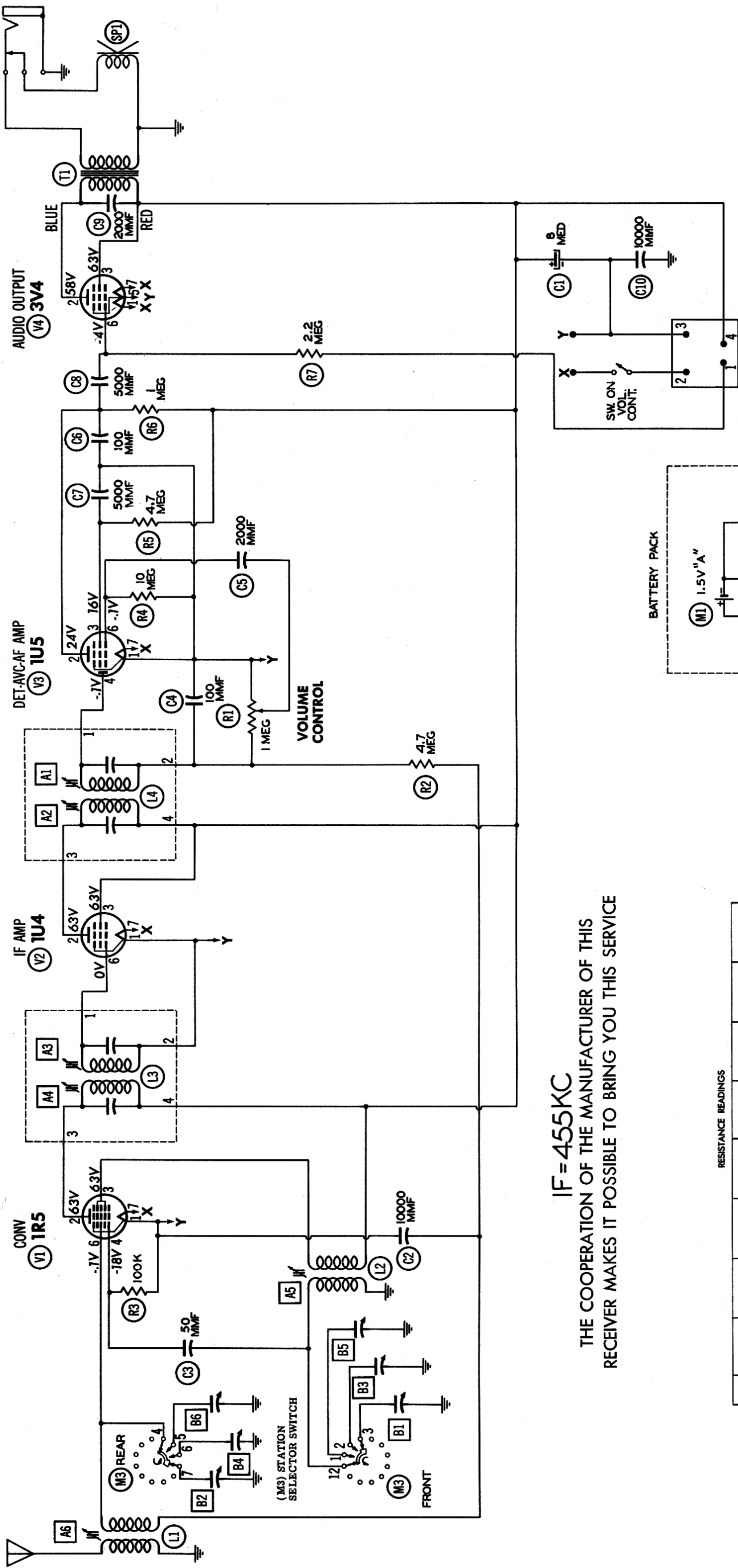
ITEM No.	USE	DC RES.		REPLACEMENT DATA			NOTES
		PRI.	SEC.	DARB PART No.	MEISSNER PART No.	MILLER PART No.	
L1	Ant. Coil	50Ω	9Ω	BS2248	14-1071	BC-386	70-A
L2	Osc. Coil	1.8Ω	5.8Ω	BS2249	14-1074	BC-387	70-Osc.
L3	Input IF	27Ω	27Ω	BS2244	16-6758	BC-352	12-C1
L4	Output IF	27Ω	27Ω	BS2246	16-6758	BC-353	12-C2

## BATTERIES

ITEM No.	VOLTAGE	DARB PART No.	REPLACEMENT DATA			INSTALLATION NOTES
			EVEREADY	BURGESS		
M1	1.5V "A"	950	"A"	"A-B"	"B"	Connect 2 in parallel
M2	67.5V "B"		467		XX45	

## MISCELLANEOUS

ITEM No.	PART NAME	DARB PART No.	NOTES
M3	Switch	BS2282	Station Selector ( 2 Pole-3 Position Rotary, Wafer Type)
B1	Trimmer Cap.	BS2282	Osc. (9-180MMF) Station 1
B3	Trimmer Cap.	BS2282	Osc. (9-180MMF) Station 2
B5	Trimmer Cap.	BS2282	Osc. (9-180MMF) Station 3
B2	Trimmer Cap.	BS2284	Ant. (50-380MMF) Station 1
B4	Trimmer Cap.	BS2283	Ant. (25-280MMF) Station 2
B6	Trimmer Cap.	BS2283	Ant. (25-280MMF) Station 3

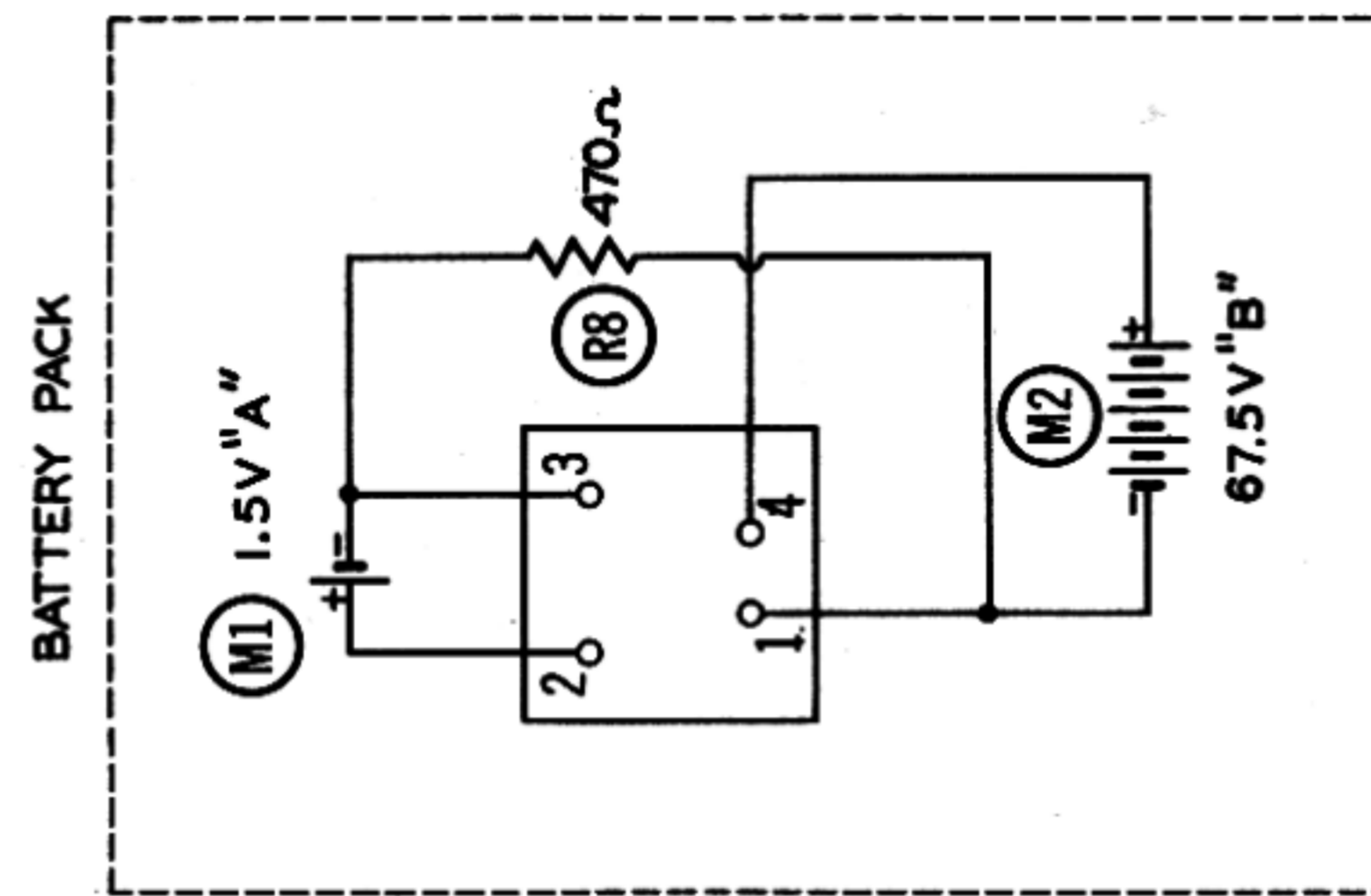


IF = 455KC  
THE COOPERATION OF THE MANUFACTURER OF THIS  
RECEIVER MAKES IT POSSIBLE TO BRING YOU THIS SERVICE

Item	Tube	Pin 1	Pin 2	Pin 3	Pin 4	Pin 5	Pin 6	Pin 7
V 1	1R5	*	↑ 27Ω	↑ 1.8Ω	100KΩ	*	8Meg	*
V 2	1U4	*	↑ 27Ω	↑ 0Ω	TP	*	27Ω	*
V 3	1U5	*	↑ 1Meg	↑ 4.7Meg	1Meg	TP	10Meg	*
V 4	3V4	*	↑ 388Ω	200KΩ	TP	*	2.2 Meg	*

\* DO NOT MEASURE.  
† MEASURED FROM POSITIVE SIDE OF C1.  
TP-TIE POINT

1. DC voltage measurements taken with vacuum tube voltmeter;
2. Socket connections are shown as bottom views.
3. Measured values are from socket pin to common negative.
4. Nominal tolerance on component values makes possible a variation of ± 15% in voltage and resistance readings.
5. Volume control at maximum, no signal applied for voltage measurements.



A PHOTOFACT STANDARD NOTATION SCHEMATIC  
© Howard W. Sams & Co., Inc. 1956

310-2